

**ALUTECH SER**  
**CEPHE SİSTEMİ**  
FACADE SYSTEM

**ALUTECH SER**  
**CEPHE SİSTEMLERİ**  
FACADE SYSTEMS

**ÜRÜN TEKNİK ÖZELLİKLERİ**  
PRODUCT'S TECHNICAL FEATURES

No. Nr.	PROFİL KESİTİ PROFILE VIEW	PROFİL NO PROFILE NO	PROFİL AÇIKLAMASI PROFILE DESCRIPTION	BAĞLANTI PARÇALARI CORNER CLEATS	gr/m	STATİK STATIC			
						Ix cm <sup>4</sup>	Iy cm <sup>4</sup>	Wx cm <sup>3</sup>	Wy cm <sup>3</sup>
1		<b>SER-101</b> ( 97.6 - 53 ) ( 2 mm )	<b>TAŞIYICI T PROFİL</b> MULLION T PROFILE		935	6	23,74		
2		<b>SER-102</b> ( 97.6 - 70 ) ( 2 mm )	<b>TAŞIYICI T PROFİL</b> MULLION T PROFILE		1035	13,83	23,75		
3		<b>SER-103</b> ( 26.6 - 53 ) ( 2 mm )	<b>TAŞIYICI L PROFİL</b> MULLION L PROFILE		479	5.11	0,86		
4		<b>SER-104</b> ( 26.6 - 6.8 ) ( 18 mm )	<b>TAŞIYICI PROFİL</b> MULLION PROFILE		227				
5		<b>SER-105</b> ( 38.7 - 19.3 ) ( 15 mm )	<b>KÖŞE DERZ PROFİL</b> CORNER JOINT PROFILE		312				
6		<b>SER-106</b> ( 60 - 42.5 ) ( 25 mm )	<b>TAŞIYICI T PROFİL</b> MULLION T PROFILE		677	4.04	4,49		
7		<b>SER-107</b> ( 80 - 60 ) ( 2 mm )	<b>TAŞIYICI T PROFİL</b> MULLION T PROFILE		748	9.30	8,52		
8		<b>SER-108</b> ( 70 - 50 ) ( 18 mm )	<b>TAŞIYICI T PROFİL</b> MULLION T PROFILE		551	9.30	8,52		
9		<b>SER-110</b> ( 80 - 50.5 ) ( 25 mm )	<b>TAŞIYICI T PROFİL</b> MULLION T PROFILE		922	7.12	12,10		
10		<b>SER-111</b> ( 80 - 40 ) ( 2 mm )	<b>TAŞIYICI T PROFİL</b> MULLION T PROFILE		551	4.77	4,69		

Profil değerleri teoriktir. Ağırlık olarak testimde yapılan tartım geçerlidir.  
Profil imatları TS EN 12020-2 ve TS EN 755-9 toleransı,  
Moment değerleri EN 14024'e göre hesaplanmıştır.

Profile values are theoretical pre-shipment weight will be valid.  
The tolerances of Profile manufacturing are calculated according to EN 12020-2  
and TS EN 755-9; moment values are calculated according to EN 14024.

**ALUTECH SER**  
**CEPHE SİSTEMLERİ**  
FACADE SYSTEMS

**ÜRÜN TEKNİK ÖZELLİKLERİ**  
PRODUCT'S TECHNICAL FEATURES







No. Nr.	PROFİL KESİTİ PROFILE VIEW	PROFİL NO PROFILE NO	PROFİL AÇIKLAMASI PROFILE DESCRIPTION	BAĞLANTI PARÇALARI CORNER CLEATS	gr/m	STATİK STATIC			
						Ix cm <sup>4</sup>	Iy cm <sup>4</sup>	Wx cm <sup>3</sup>	Wy cm <sup>3</sup>
11		<b>SER-112</b> ( 60 - 40 ) ( 1.8 mm )	<b>TAŞIYICI T PROFİL</b> MULLION T PROFILE		447	2,41	2,67		
12		<b>SER-113</b> ( 40 - 80 ) ( 15 mm )	<b>TAŞIYICI PROFİL</b> MULLION PROFILE		951	10,16	5,08		
13		<b>SER-114</b> ( 60 - 50 ) ( 1.8 mm )	<b>TAŞIYICI T PROFİL</b> MULLION T PROFILE		505	4,56	2,96		
14		<b>SER-201</b> ( 19,2 - 4,8 ) ( 1.8 mm )	<b>KLİPS PROFİL</b> CLIP PROFILE		496				
15		<b>SER-202</b> ( 10,5 - 55,1 ) ( 2,5 mm )	<b>KLİPS ADAPTÖR PROFİL</b> CLIP ADAPTER PROFILE		432				
16		<b>SER-203</b> ( 25 - 7 ) ( 12 mm )	<b>YATAY DERZ PROFİL (4mm)</b> HORIZONTAL JOINT PROFILE (4mm)		111				
17		<b>SER-204</b> ( 20 - 5,8 ) ( 12 mm )	<b>DÜŞEY DERZ PROFİL (4mm)</b> TRANSOM JOINT PROFILE (4mm)		92				
18		<b>SER-205</b> ( 25 - 7 ) ( 12 mm )	<b>YATAY DERZ PROFİL (8mm)</b> HORIZONTAL JOINT PROFILE (8mm)		121				
19		<b>SER-206</b> ( 19,8 - 7 ) ( 12 mm )	<b>DÜŞEY DERZ PROFİL (8mm)</b> TRANSOM JOINT PROFILE (8mm)		101				
20		<b>SER-207</b> ( 35 - 35 ) ( 12 mm )	<b>KÖŞE DERZ PROFİL</b> CORNER JOINT PROFILE		287				

Profil değerleri teoriktir. Ağırlık olarak testimde yapılan tartım geçerlidir.  
Profil imalatları TS EN 12020-2 ve TS EN 755-9 toleransı,  
Moment değerleri EN 14024'e göre hesaplanmıştır.

Profile values are theoretical pre-shipment weight will be valid.  
The tolerances of Profile manufacturing are calculated according to EN 12020-2  
and TS EN 755-9; moment values are calculated according to EN 14024.

ALUTECH SER  
CEPHE SİSTEMLERİ  
FACADE SYSTEMS

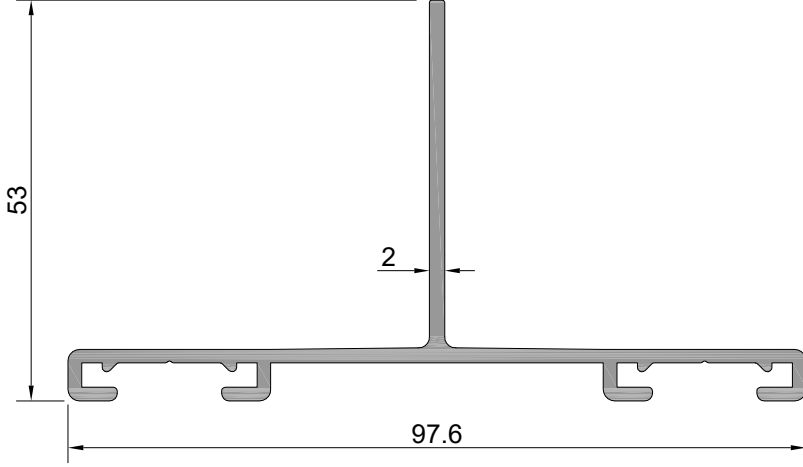
ÜRÜN TEKNİK ÖZELLİKLERİ  
PRODUCT'S TECHNICAL FEATURES

No. Nr.	PROFİL KESİTİ PROFILE VIEW	PROFİL NO PROFILE NO	PROFİL AÇIKLAMASI PROFILE DESCRIPTION	BAĞLANTI PARÇALARI CORNER CLEATS	gr/m	STATİK STATIC			
						Ix cm <sup>4</sup>	Iy cm <sup>4</sup>	Wx cm <sup>3</sup>	Wy cm <sup>3</sup>
11		SER-208 ( 35 - 35 ) ( 12 mm )	KÖŞE DERZ PROFİL CORNER JOINT PROFILE		282				
12		SER-209 ( 25 - 50 ) ( 18 mm )	TAŞIYICI L PROFİL MULLION L PROFILE		347				
13		AG-201 ( 21.1 - 60 ) ( 2 mm )	AGRAF PROFİL AGRAF PROFILE		615				
14		SER-301 ( 80 - 50 ) ( 3 mm )	TAŞIYICI L PROFİL MULLION L PROFILE		1032				
15		SER-302 ( 120 - 50 ) ( 3 mm )	TAŞIYICI L PROFİL MULLION L PROFILE		1357				
16		SER-303 ( 160 - 50 ) ( 3 mm )	TAŞIYICI L PROFİL MULLION L PROFILE		1683				
17									
18									
19									
20									

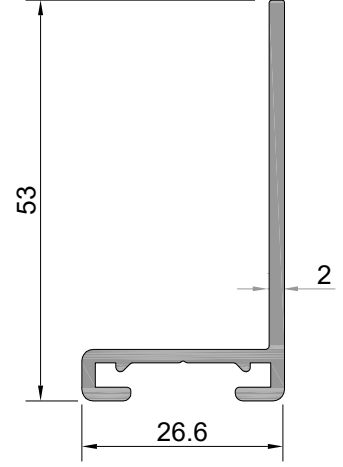
**ALUTECH SER**  
**CEPHE SİSTEMİ PROFİLLERİ**  
FAÇADE SYSTEM PROFILE

ÜRÜN TEKNİK ÖZELLİKLERİ  
PRODUCT'S TECHNICAL FEATURES

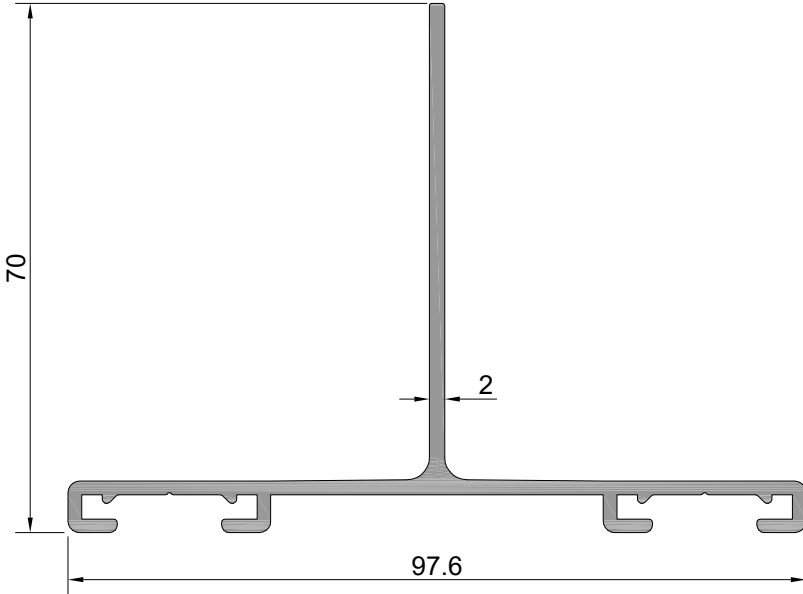
**KLİPSLİ SİSTEM**  
CLIP SYSTEM



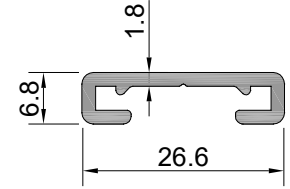
Profil No: SER-101  
Ağırlık : 935 gr/m  
Ix : 6,00 cm<sup>4</sup>  
Iy : 23,74 cm<sup>4</sup>



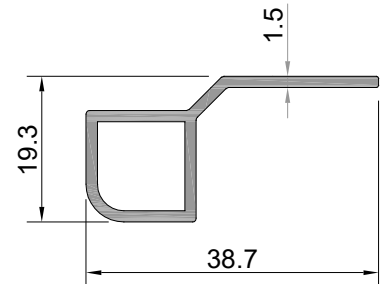
Profil No: SER-103  
Ağırlık : 479 gr/m  
Ix : 5,11 cm<sup>4</sup>  
Iy : 0,86 cm<sup>4</sup>



Profil No: SER-102  
Ağırlık : 1035 gr/m  
Ix : 13,83 cm<sup>4</sup>  
Iy : 23,75 cm<sup>4</sup>



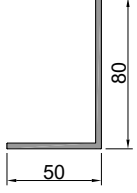
Profil No: SER-104  
Ağırlık : 227 gr/m



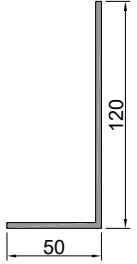
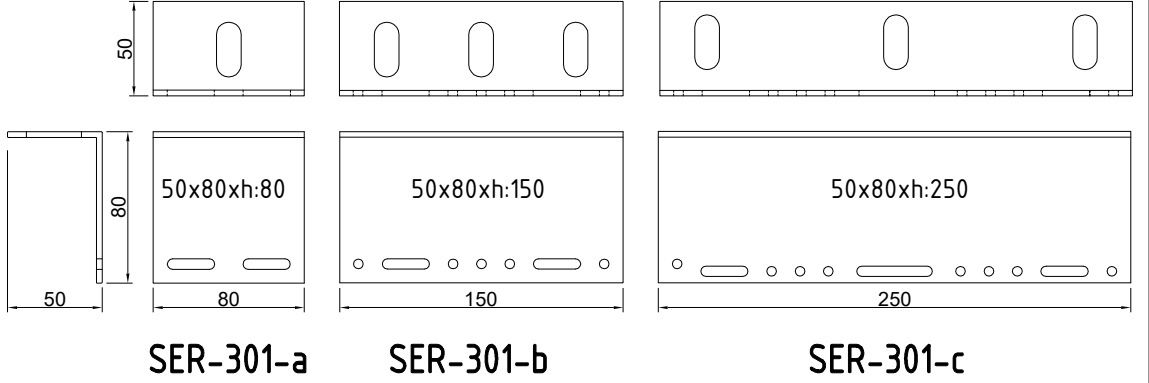
Profil No: SER-105  
Ağırlık : 312 gr/m

**ALUTECH SER**  
**CEPHE SİSTEMİ**  
FAÇADE SYSTEM

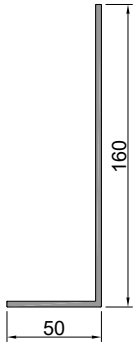
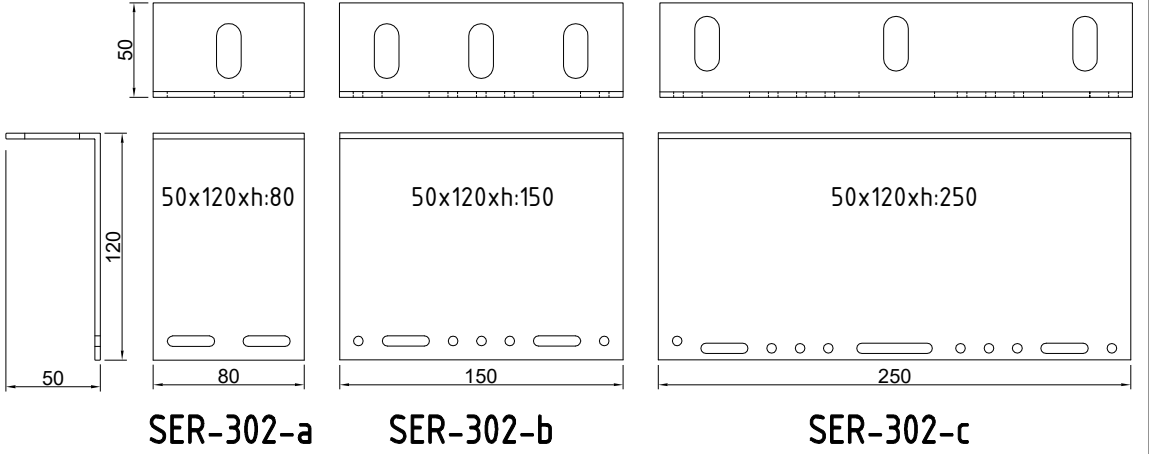
ÜRÜN TEKNİK ÖZELLİKLERİ  
PRODUCT'S TECHNICAL FEATURES



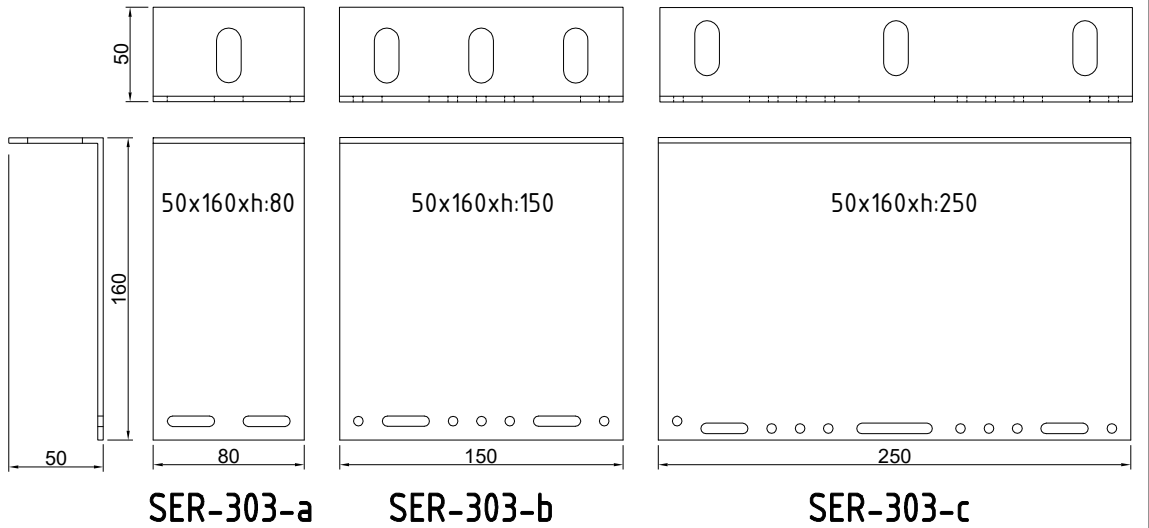
SER-301  
Ağırlık:1032 gr/m



SER-302  
ağırlık:1357 gr/m

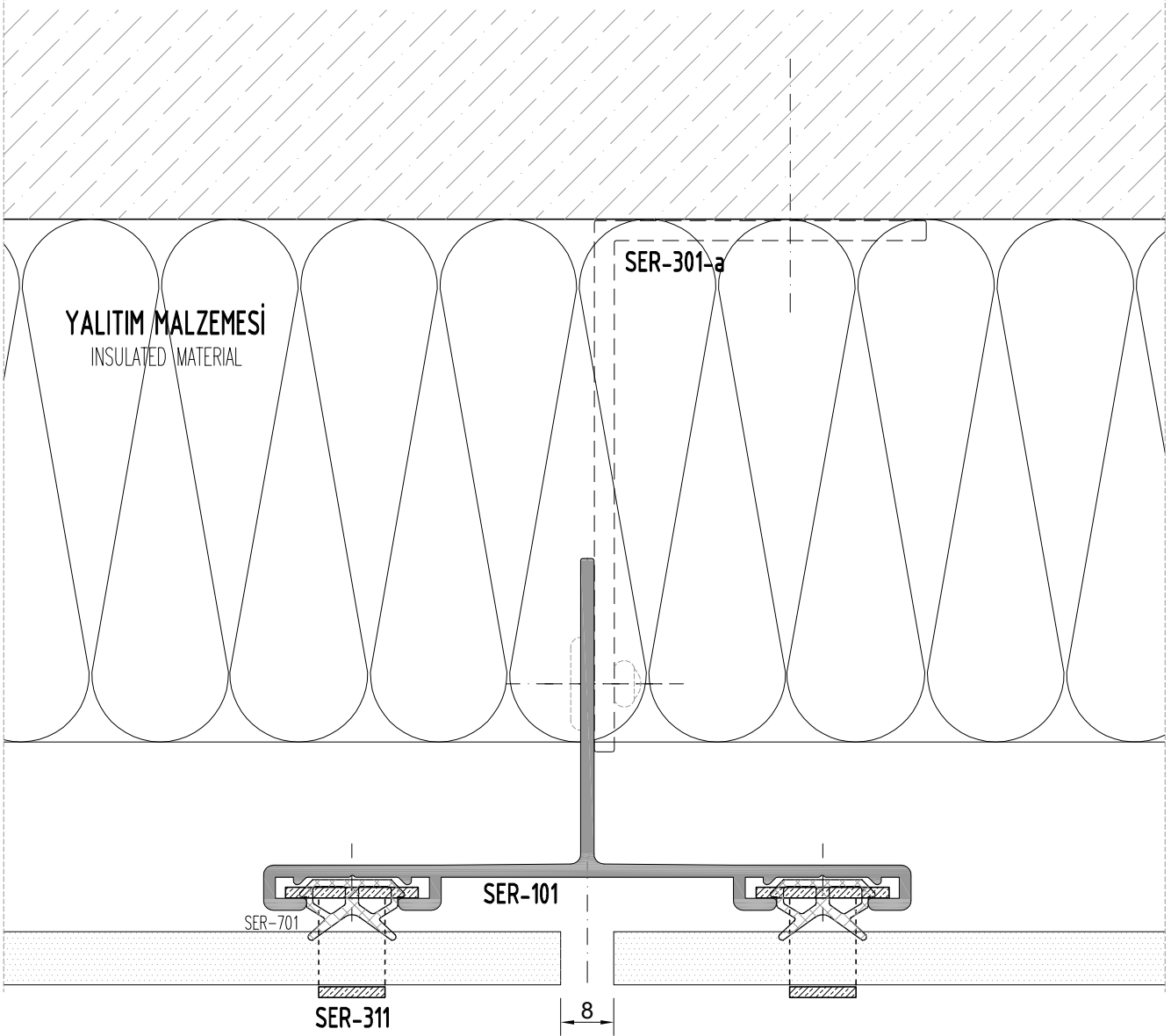
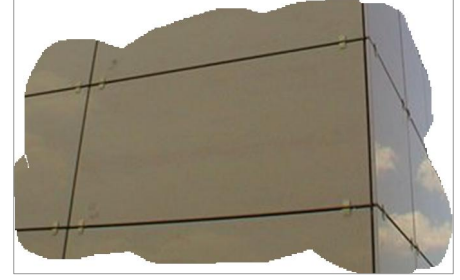


SER-303  
ağırlık:1683 gr/m



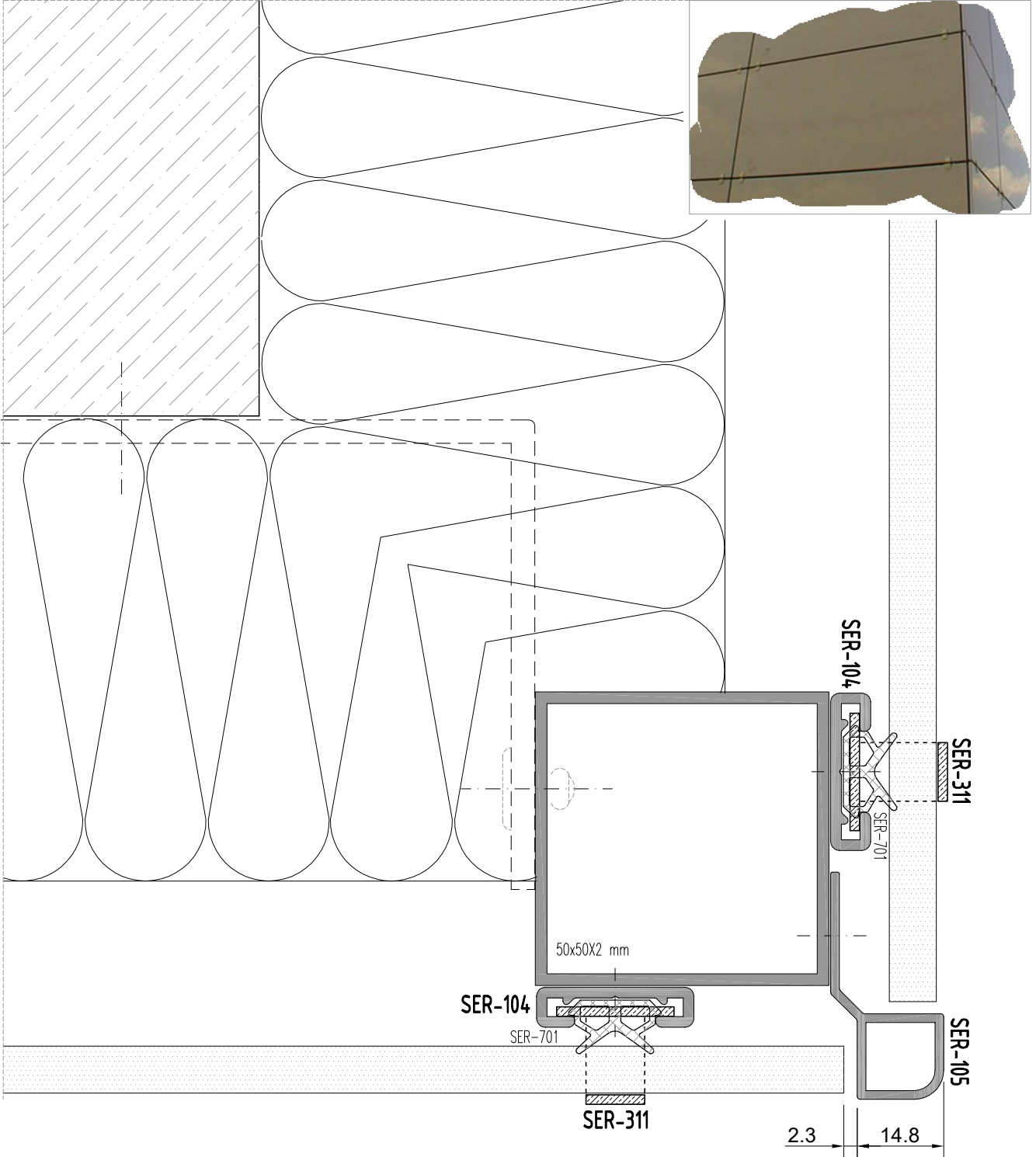
ALUTECH SER  
CEPHE SİSTEMİ  
FAÇADE SYSTEM

PLAN DETAY  
PLAN DETAIL



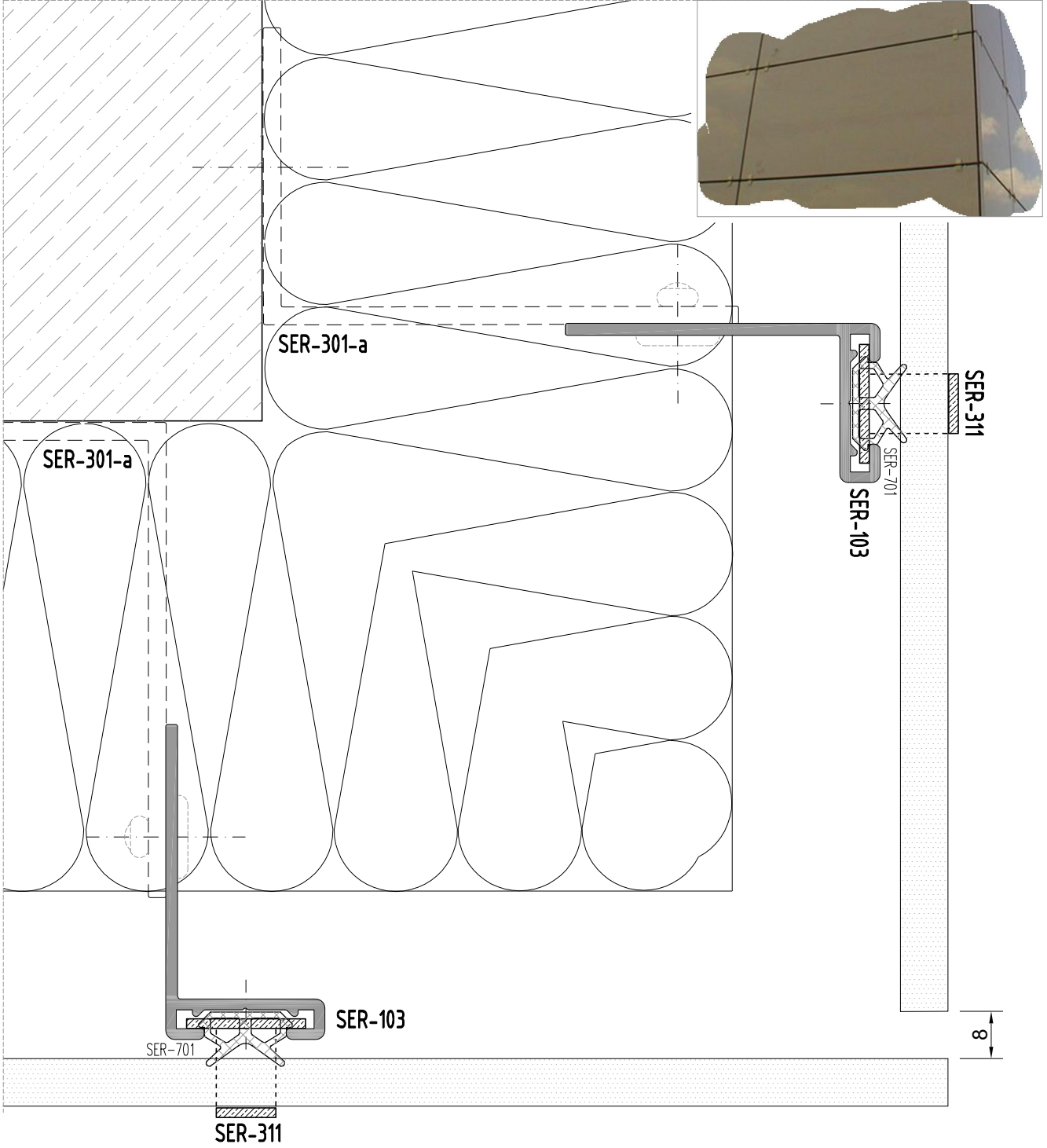
ALUTECH SER  
CEPHE SİSTEMİ  
FACADE SYSTEM

PLAN DETAY  
PLAN DETAIL



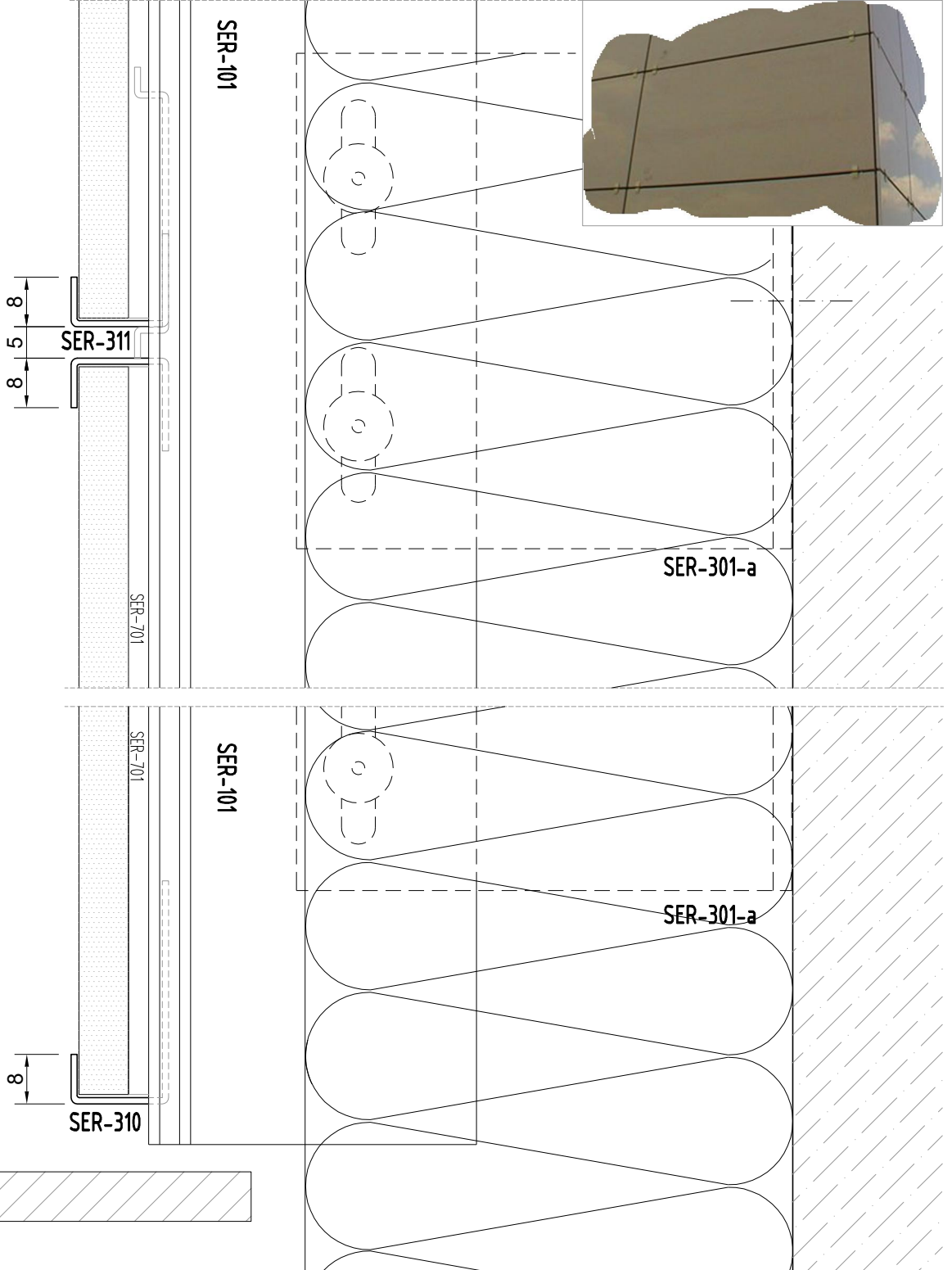
ALUTECH SER  
CEPHE SİSTEMİ  
FACADE SYSTEM

PLAN DETAY  
PLAN DETAIL



ALUTECH SER  
CEPHE SİSTEMİ  
FAÇADE SYSTEM

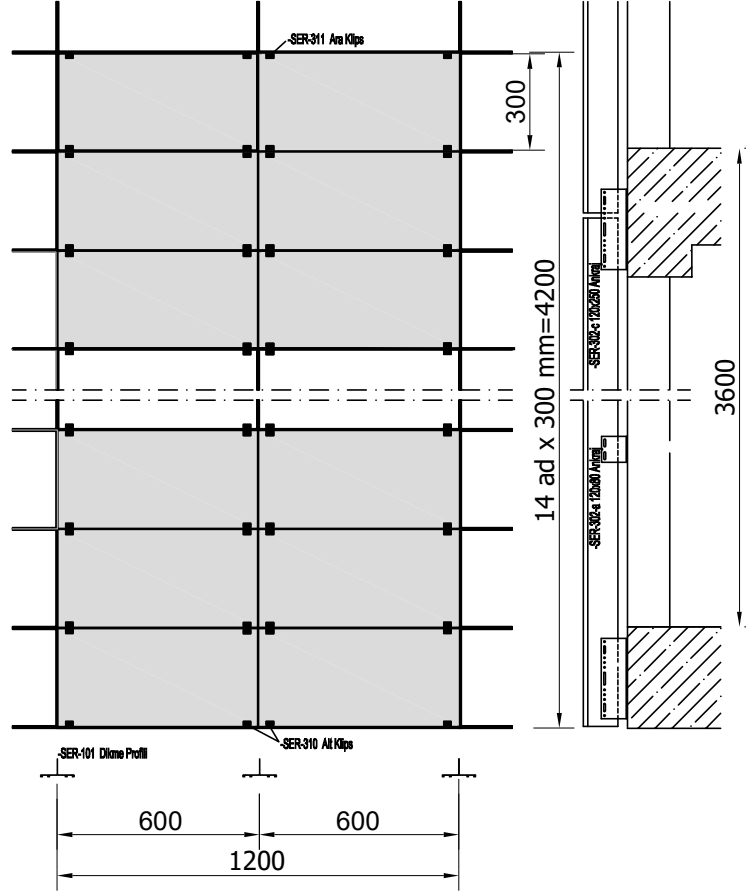
KESİT DETAY  
SECTION DETAIL



# ALUTECH SER CEPHE SİSTEMİ FAÇADE SYSTEM

ÜRÜN TEKNİK ÖZELLİKLERİ  
PRODUCT'S TECHNICAL FEATURES

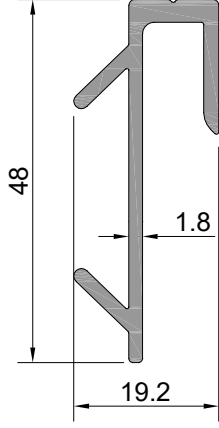
## ANALİZ ÖRNEĞİ -30 x 60 cm TAŞ İÇİN ANALİZ 5,05 m<sup>2</sup> için analiz değerleri alınmıştır.



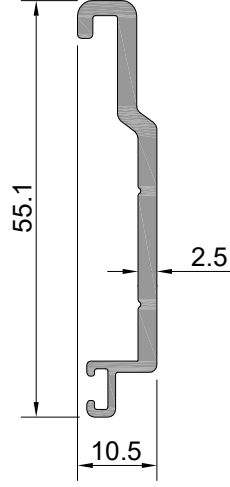
MALZEMENİN CİNSİ	BİRİM	MİKTAR	TOPLAM
-SER-101 Dikme Profili	0,933 kg/mt	12,6 mt <sup>(4,2x3)</sup>	11,76 kg
-SER-302-c 120x250 Ankrāj	3 ad.	1 ad.	3 ad.
-SER-302-a 120x80 Ankrāj	3 ad.	1 ad.	3 ad.
-SER-310 Alt Klips	4 ad.	1 ad.	4 ad.
-SER-311 Ara Klips	4 ad.	28 taş	112 ad-SER-310=104 ad
-SER-312 8mm Fuga Elamanı	2 ad.	28 taş	56 ad.
-4,8x15 mm Geniş Kafa Pop Perçin (Ankrājlarda Kullanılır.)	SER-302-c 3x3:9ad. SER-302-a 3x1:3ad.	9+3	12 ad.
-4,0x10mm Alü. Pop Perçin	SER-310+SER312	4+56	60 ad.
-Çelik dübel (paslanmaz)	SER-302-c 3x3:9ad. SER-302-a 3x1:3ad.	9+3	12 ad.
-SER-701 EPDM Fital (0.65gr)	12.6 mt <sup>(4,6x3)</sup>	2 sıra	25.20 mt

**ALUTECH SER**  
**CEPHE SİSTEMİ PROFİLLERİ**  
FAÇADE SYSTEM PROFILE

ÜRÜN TEKNİK ÖZELLİKLERİ  
PRODUCT'S TECHNICAL FEATURES

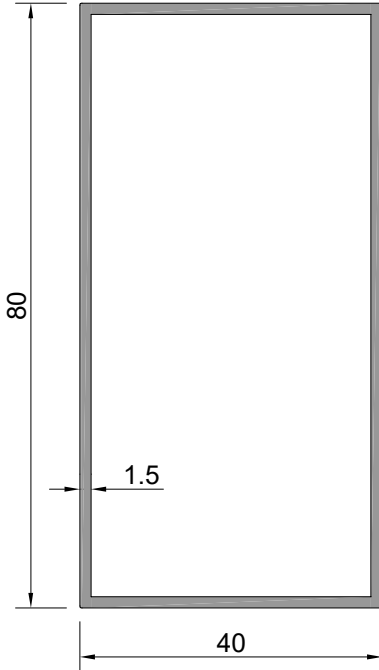


Profil No: SER-201  
Ağırlık : 496 gr/m



Profil No: SER-202  
Ağırlık : 432 gr/m

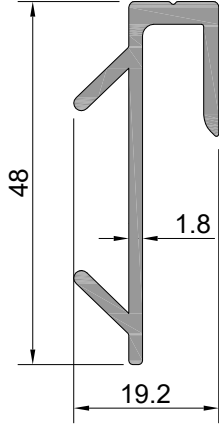
SER-201-a	50 mm	100 adet/pcs
-----------	-------	--------------



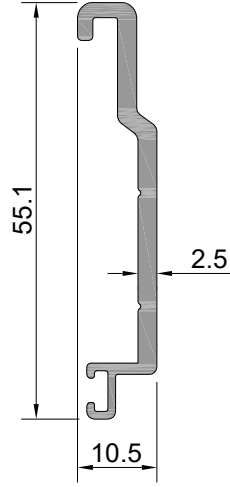
Profil No: SER-113  
Ağırlık : 951 gr/m  
Ix : 10,16 cm<sup>4</sup>  
Iy : 29,89 cm<sup>4</sup>

**ALUTECH SER**  
**CEPHE SİSTEMİ PROFİLLERİ**  
FAÇADE SYSTEM PROFILE

ÜRÜN TEKNİK ÖZELLİKLERİ  
PRODUCT'S TECHNICAL FEATURES

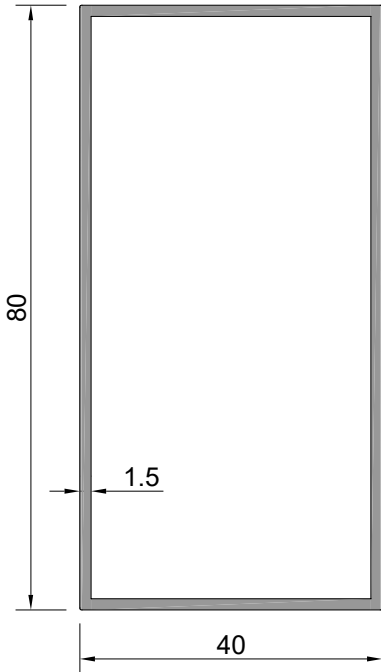


Profil No: SER-201  
Ağırlık : 495 gr/m



Profil No: SER-202  
Ağırlık : 432 gr/m

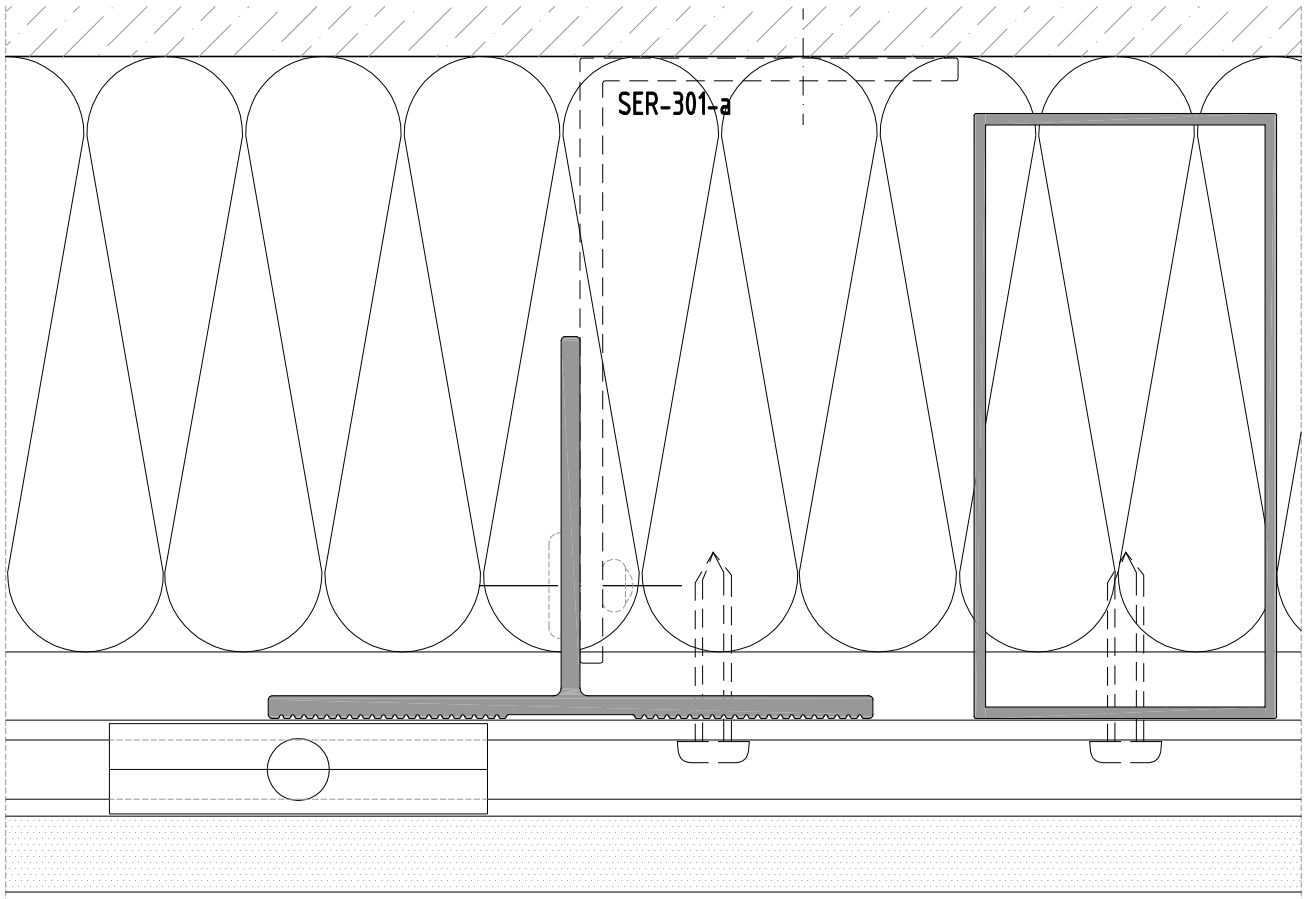
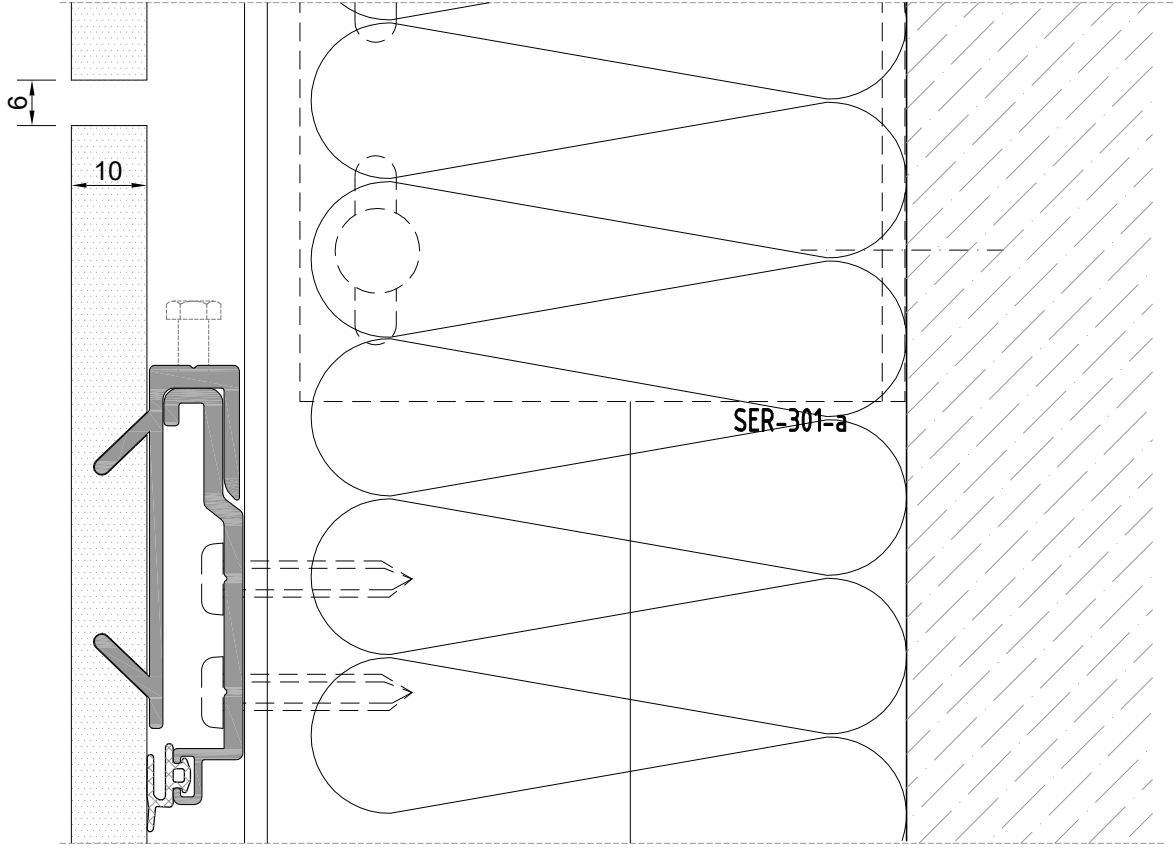
SER-201-a	50 mm	100 adet/pcs
-----------	-------	--------------



Profil No: SER-113  
Ağırlık : 951 gr/m  
Ix : 10,16 cm<sup>4</sup>  
Iy : 29,89 cm<sup>4</sup>

ALUTECH SER  
CEPHE SİSTEMİ  
FACADE SYSTEM

PLAN VE KESİT DETAY  
PLAN AND SECTION DETAIL



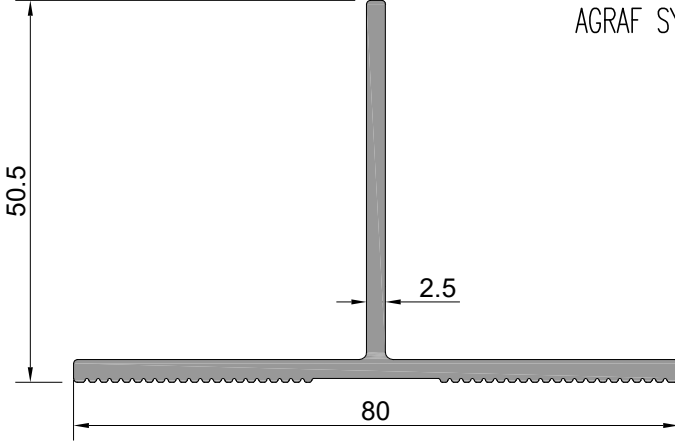
Profil değerleri teoriktir. Ağırlık olarak testimde yapılan tartım geçerlidir.  
Profil imalatları TS EN 12020-2 ve TS EN 755-9 toleransı,  
Moment değerleri EN 14024'e göre hesaplanmıştır.

Profile values are theoretical pre-shipment weight will be valid.  
The tolerances of Profile manufacturing are calculated according to EN 12020-2  
and TS EN 755-9; moment values are calculated according to EN 14024.

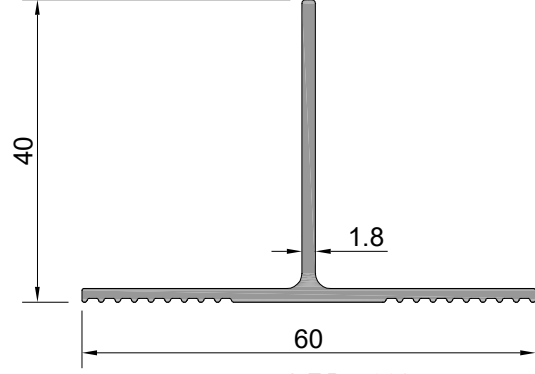
ALUTECH SER  
CEPHE SİSTEMİ  
FAÇADE SYSTEM

ÜRÜN TEKNİK ÖZELLİKLERİ  
PRODUCT'S TECHNICAL FEATURES

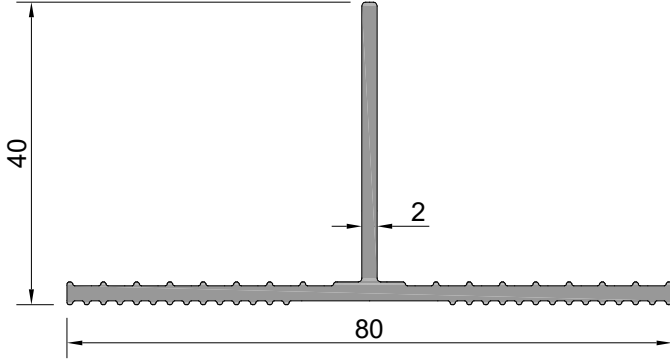
AGRAF SİSTEM  
AGRAF SYSTEM



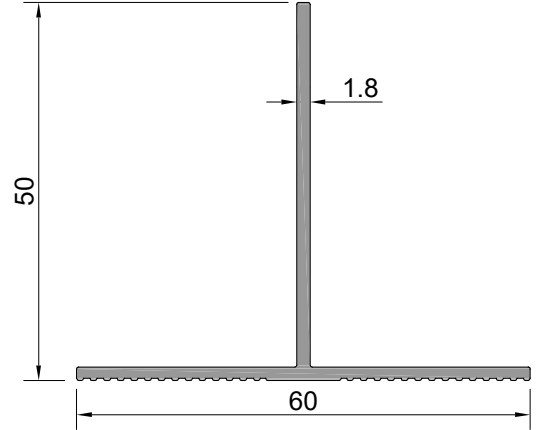
Profil No: SER-110  
Ağırlık : 922 gr/m  
lx : 7,12 cm<sup>4</sup>  
ly : 12,10 cm<sup>4</sup>



Profil No: SER-112  
Ağırlık : 447 gr/m  
lx : 2,41 cm<sup>4</sup>  
ly : 2,67 cm<sup>4</sup>



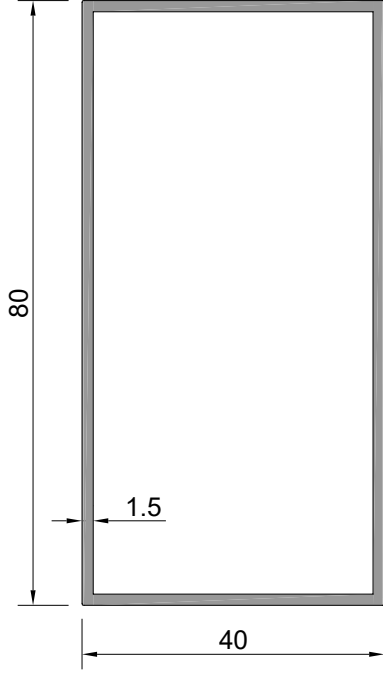
Profil No: SER-111  
Ağırlık : 689 gr/m  
lx : 2,94 cm<sup>4</sup>  
ly : 9,64 cm<sup>4</sup>



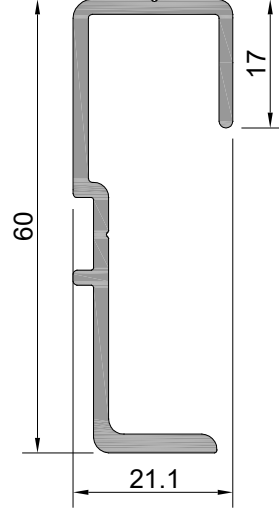
Profil No: SER-114  
Ağırlık : 505 gr/m  
lx : 4.57 cm<sup>4</sup>  
ly : 2.96 cm<sup>4</sup>

ALUTECH SER  
CEPHE SİSTEMİ  
FAÇADE SYSTEM

ÜRÜN TEKNİK ÖZELLİKLERİ  
PRODUCT'S TECHNICAL FEATURES

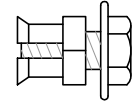


Profil No: SER-113  
Ağırlık : 951 gr/m  
lx : 10,16 cm<sup>4</sup>  
ly : 29.89 cm<sup>4</sup>



Profil No: AG-201  
Ağırlık : 615 gr/m

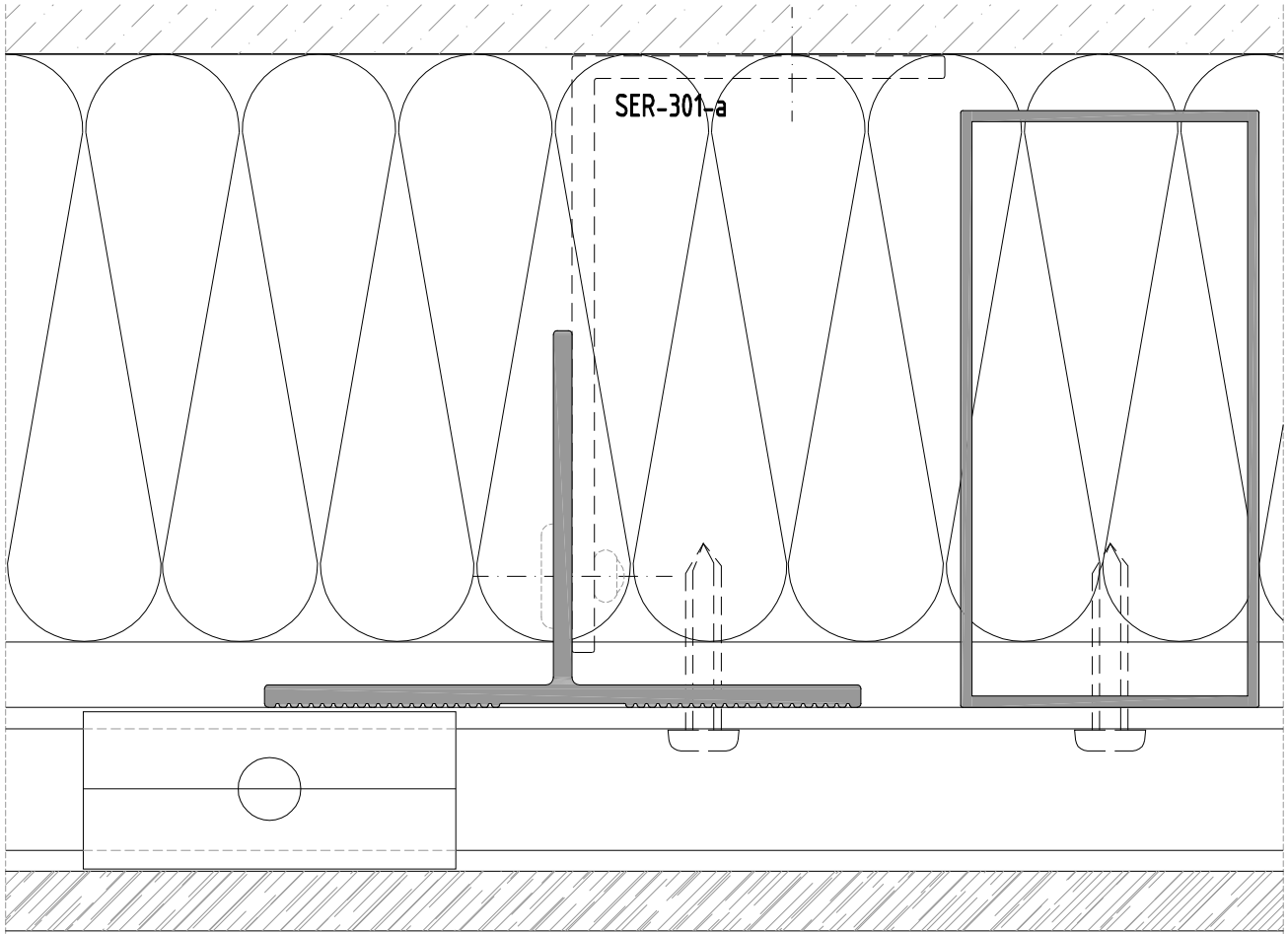
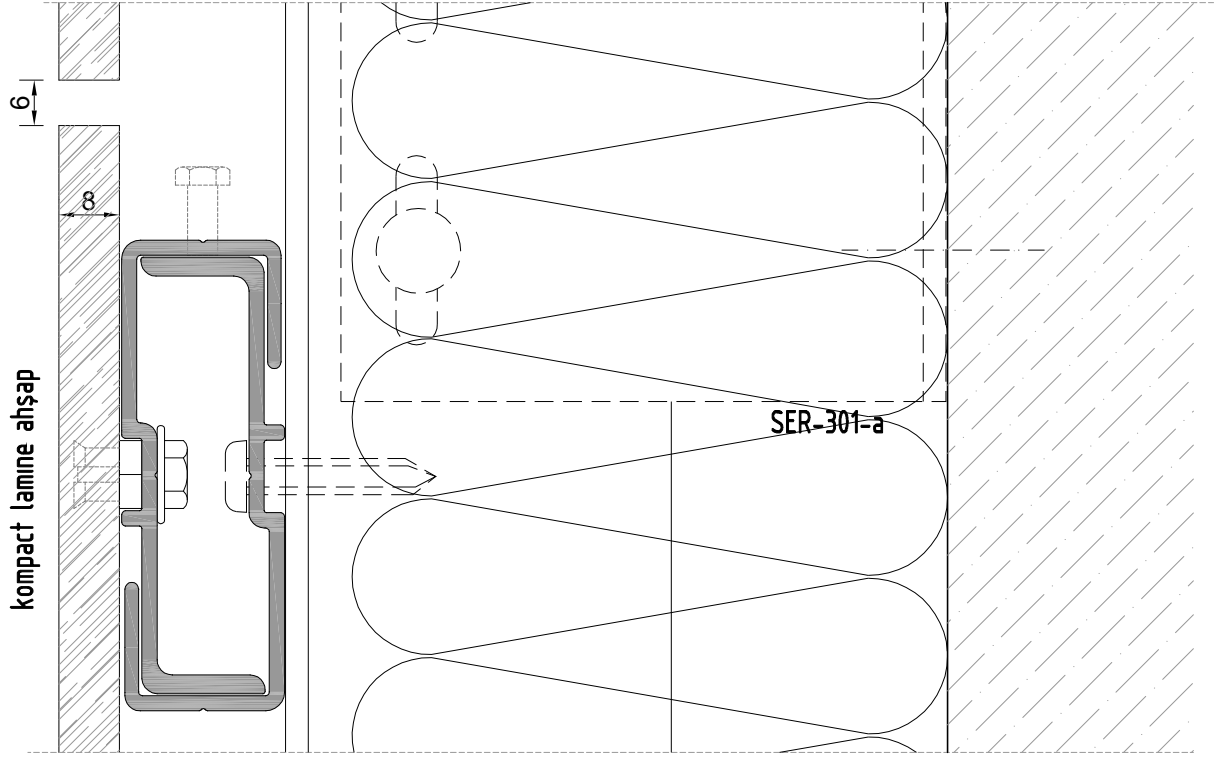
AG-201-a	50 mm	100 adet/pcs
----------	-------	--------------



Profil No: AG-301  
özel insert civata

ALUTECH SER  
CEPHE SİSTEMİ  
FACADE SYSTEM

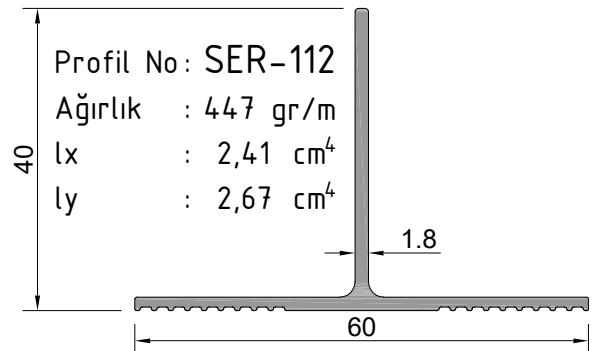
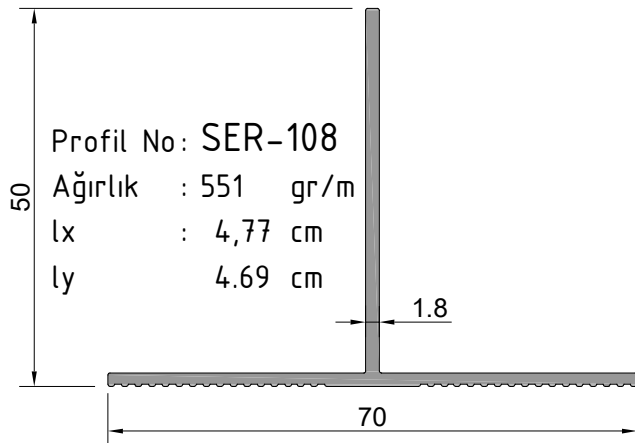
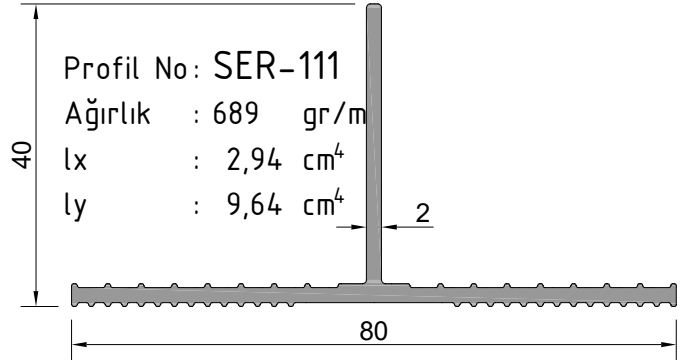
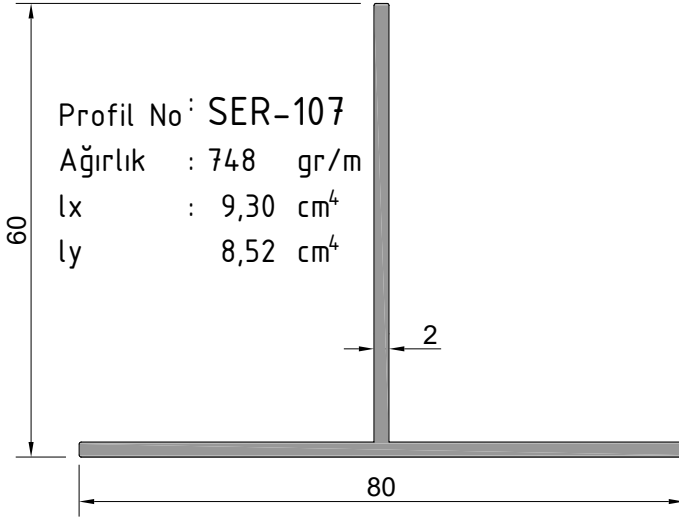
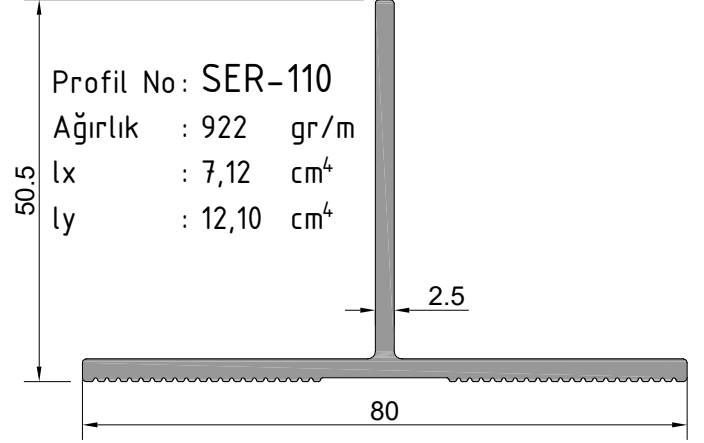
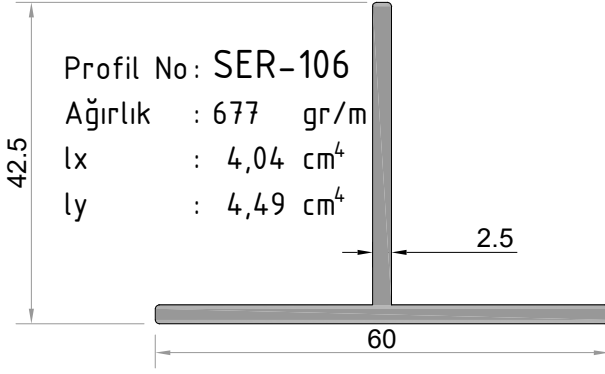
PLAN VE KESİT DETAY  
PLAN AND SECTION DETAIL



ALUTECH SER  
CEPHE SİSTEMİ  
FAÇADE SYSTEM

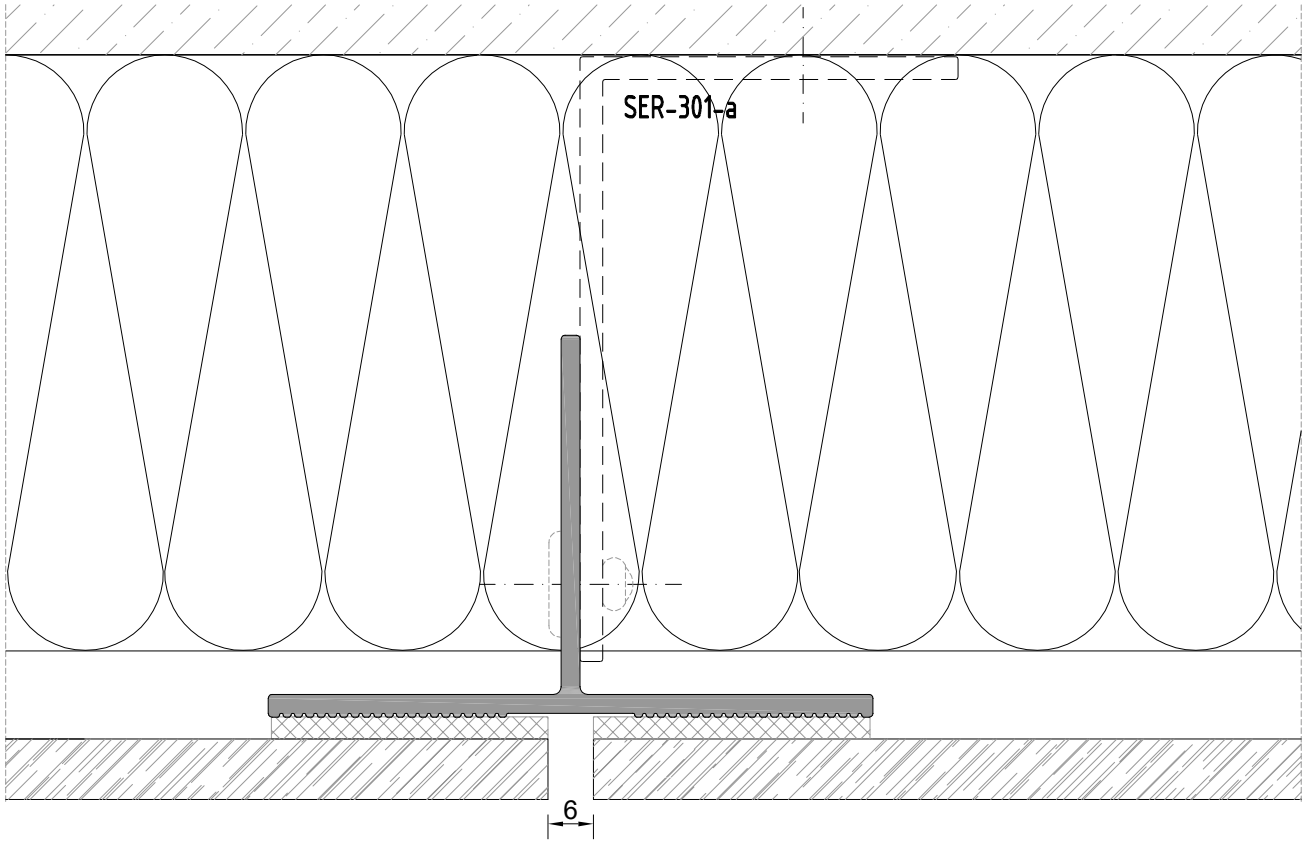
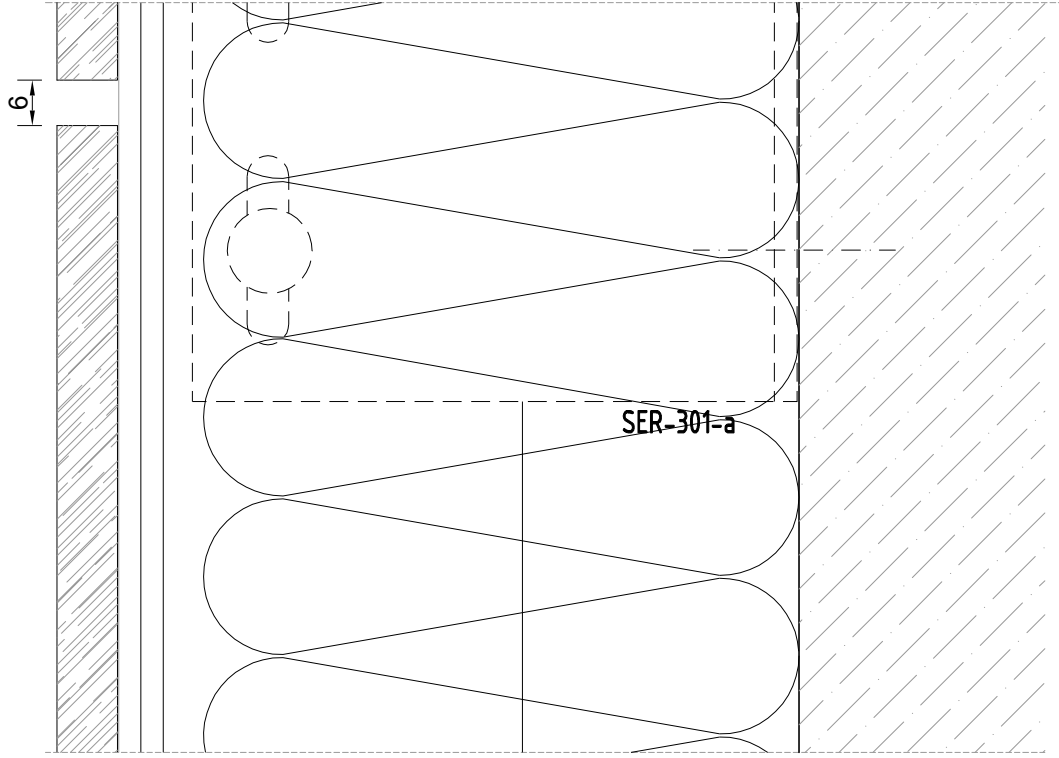
ÜRÜN TEKNİK ÖZELLİKLERİ  
PRODUCT'S TECHNICAL FEATURES

YAPIŞTIRMA SİSTEM  
BONDING SYSTEM



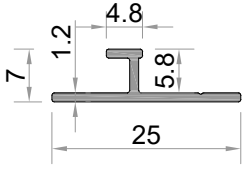
ALUTECH SER  
CEPHE SİSTEMİ  
FACADE SYSTEM

PLAN VE KESİT DETAY  
PLAN AND SECTION DETAIL

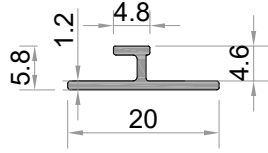


ALUTECH SER  
CEPHE SİSTEMİ  
FAÇADE SYSTEM

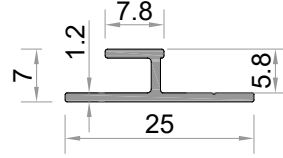
ÜRÜN TEKNİK ÖZELLİKLERİ  
PRODUCT'S TECHNICAL FEATURES



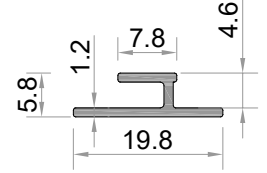
Profil No: SER-203  
Ağırlık : 111 gr/m



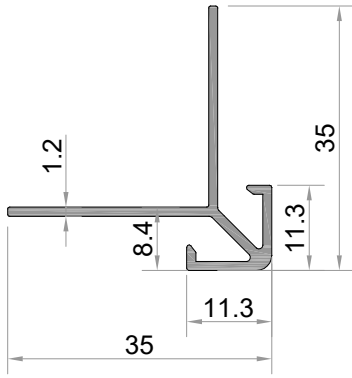
Profil No: SER-204  
Ağırlık : 92 gr/m



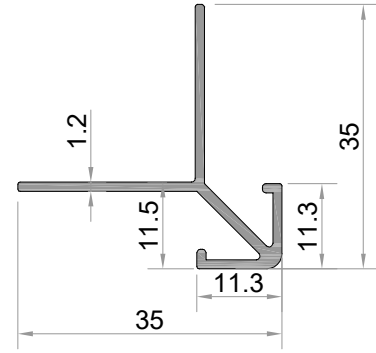
Profil No: SER-205  
Ağırlık : 121 gr/m



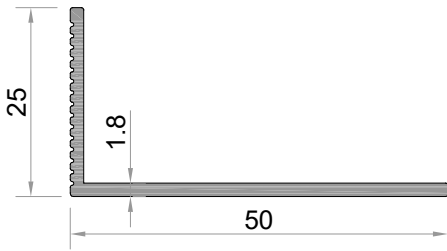
Profil No: SER-206  
Ağırlık : 101 gr/m



Profil No: SER-207  
Ağırlık : 287 gr/m



Profil No: SER-208  
Ağırlık : 282 gr/m

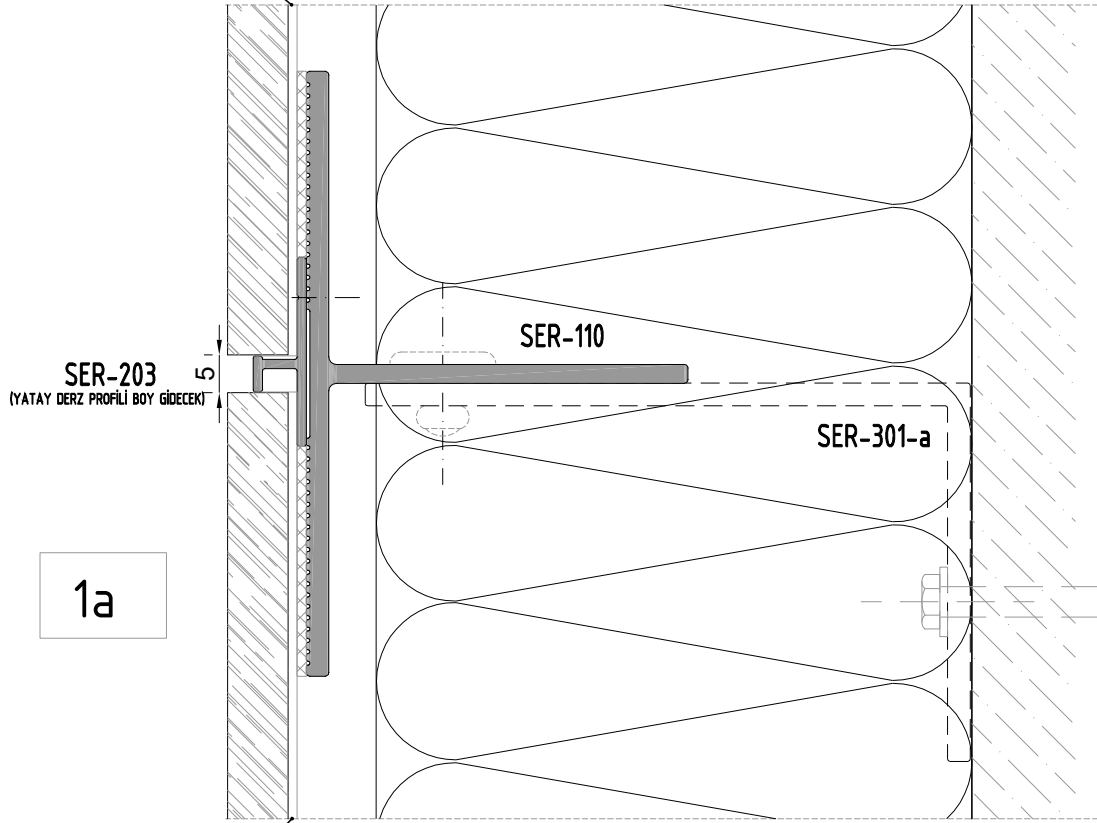


Profil No: SER-209  
Ağırlık : 347 gr/m

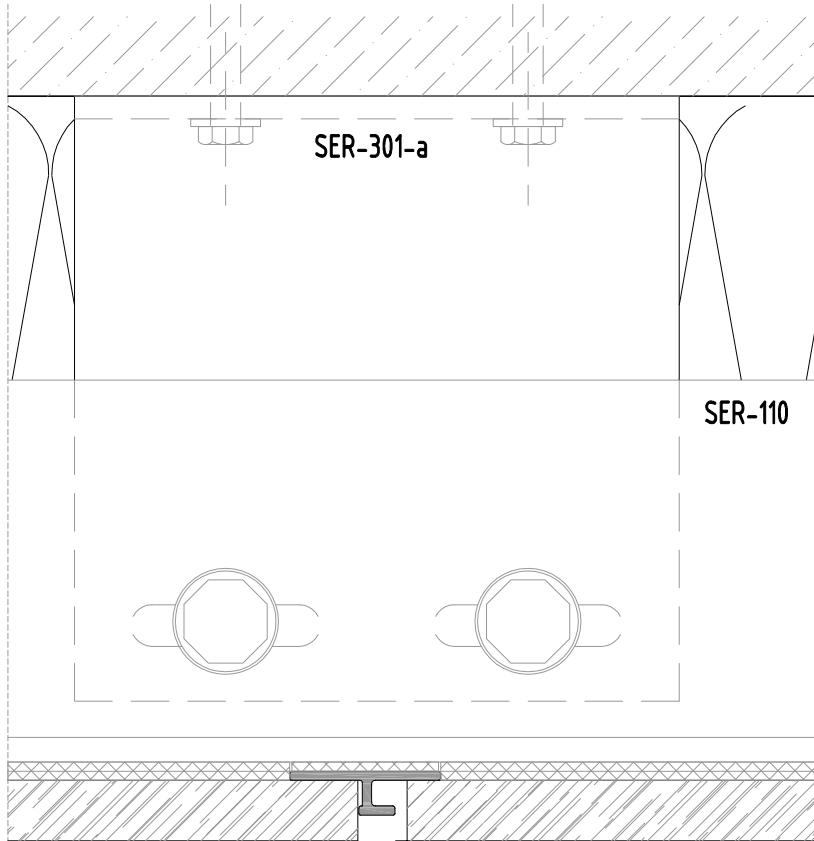
# ALUTECH SER CEPHE SİSTEMİ FACADE SYSTEM

PLAN VE KESİT DETAY  
PLAN AND SECTION DETAIL

SER-204 (DÜŞEY DERZ PROFİLİ YATAY DERZ PROFİLİNDE KESİLECEK)



SER-204 (DÜŞEY DERZ PROFİLİ YATAY DERZ PROFİLİNDE KESİLECEK)



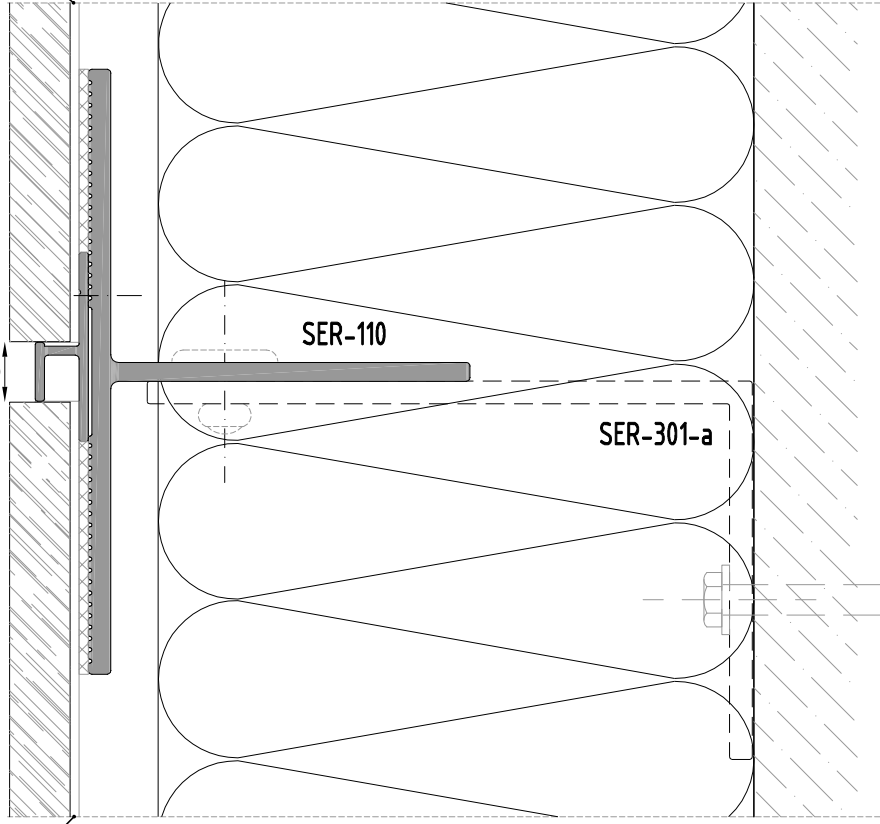
# ALUTECH SER CEPHE SİSTEMİ FACADE SYSTEM

PLAN VE KESİT DETAY  
PLAN AND SECTION DETAIL

SER-206 (DÜŞEY DERZ PROFİLİ YATAY DERZ PROFİLİNDE KESİLECEK)

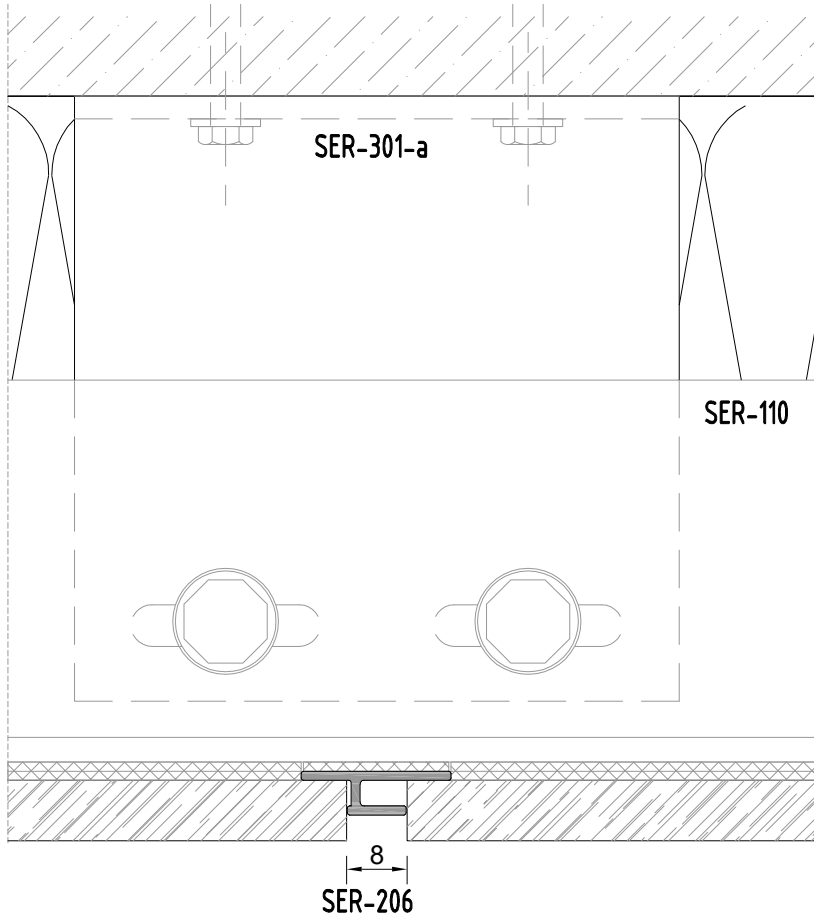
SER-205  
(YATAY DERZ PROFİLİ BOY GİDECEK)

1b



SER-206 (DÜŞEY DERZ PROFİLİ YATAY DERZ PROFİLİNDE KESİLECEK)

2b

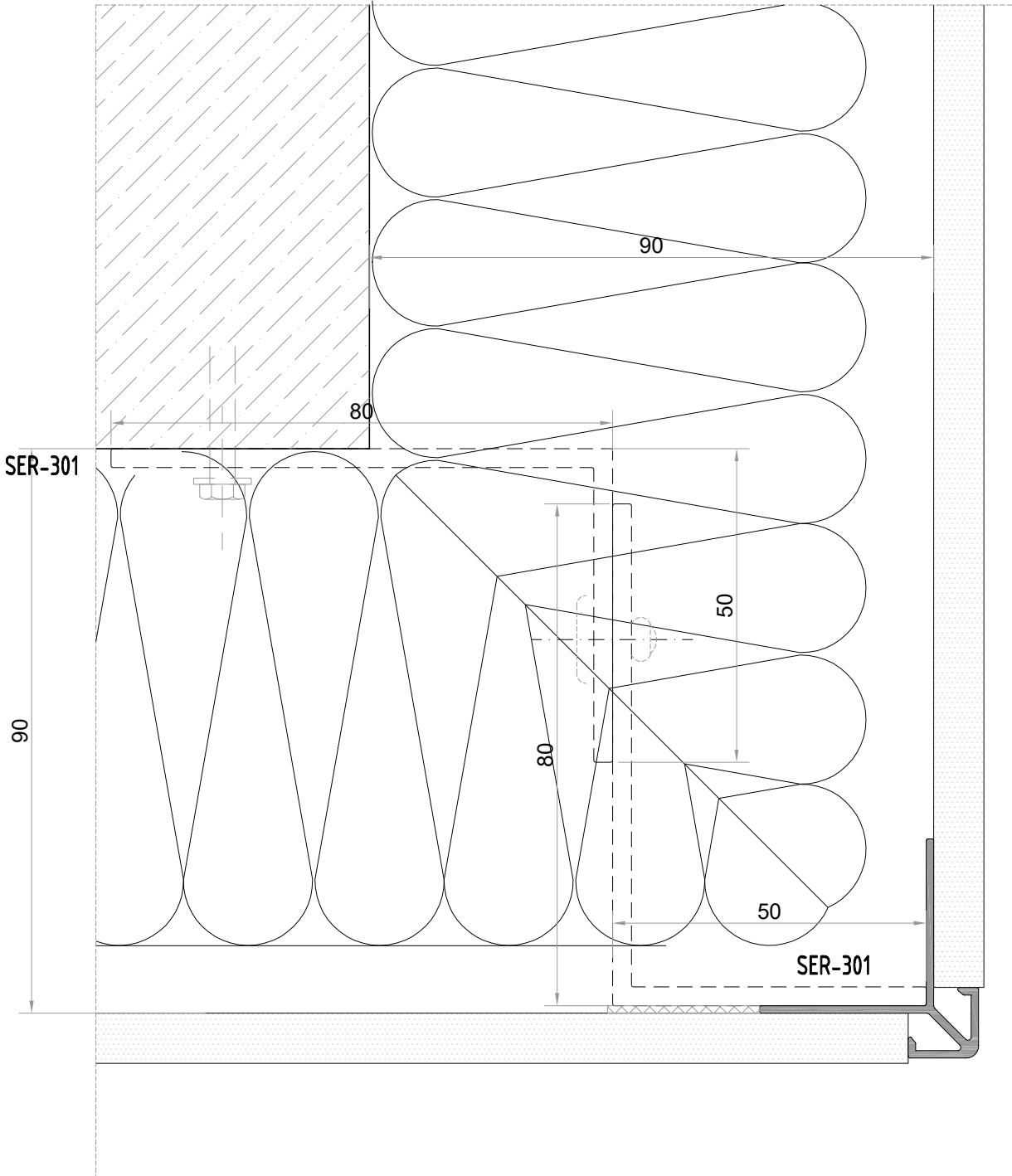


Profil değerleri teoriktir. Ağırlık olarak testimde yapılan tartım geçerlidir.  
Profil imalatları TS EN 12020-2 ve TS EN 755-9 toleransı,  
Moment değerleri EN 14024'e göre hesaplanmıştır.

Profile values are theoretical pre-shipment weight will be valid.  
The tolerances of Profile manufacturing are calculated according to EN 12020-2  
and TS EN 755-9; moment values are calculated according to EN 14024.

ALUTECH SER  
CEPHE SİSTEMİ  
FACADE SYSTEM

PLAN VE KESİT DETAY  
PLAN AND SECTION DETAIL

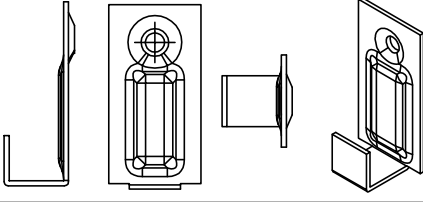


Profil değerleri teoriktir. Ağırlık olarak testimde yapılan tartım geçerlidir.  
Profil imalatları TS EN 12020-2 ve TS EN 755-9 toleransı,  
Moment değerleri EN 14024'e göre hesaplanmıştır.

Profile values are theoretical pre-shipment weight will be valid.  
The tolerances of Profile manufacturing are calculated according to EN 12020-2  
and TS EN 755-9; moment values are calculated according to EN 14024.

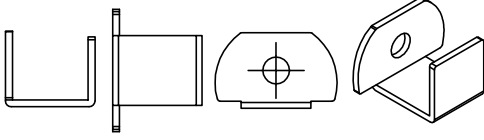
# ALUTECH SER CEPHE SİSTEMİ PROFİLLERİ FAÇADE SYSTEM PROFILE

KLİPSLİ SİSTEM ÜRÜN TEKNİK ÖZELLİKLERİ  
CLIP SYSTEM PRODUCT'S TECHNICAL FEATURES



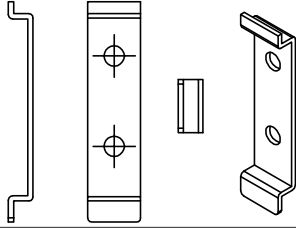
## SER-310

ALT KLİPS (Taş tutturma ( alt başlangıç ) tırnağı)  
304 Kalite Paslanmaz Çelik 1.2 mm, talepedilen RAL kodunda boyanır.



## SER-311

ARA KLİPS (Taş tutturma ara tırnak )  
304 Kalite Paslanmaz Çelik 1.2 mm, talepedilen RAL kodunda boyanır.  
8-9-10-11 mm Taşlar için



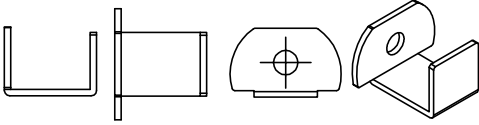
## SER-312

FUGA ELAMANI (Derz ayar parçası)  
304 Kalite Paslanmaz Çelik 1.2 mm, Siyah boyalı  
6-8 mm Derz için



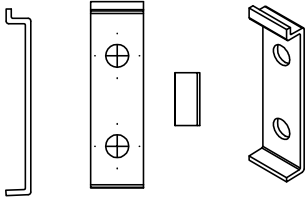
## SER-313

45° DERZ AYAR PARÇASI  
304 Kalite Paslanmaz Çelik 1.2 mm, Siyah boyalı  
8 mm derz için



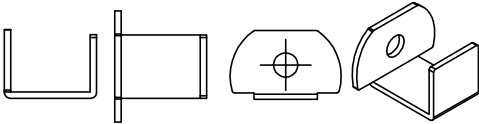
## SER-314

ARA KLİPS (Taş tutturma ara tırnak )  
304 Kalite Paslanmaz Çelik 1.2 mm, talepedilen RAL kodunda boyanır.  
11-12 mm Taşlar için



## SER-315

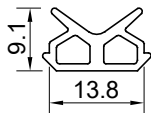
FUGA ELAMANI (Derz ayar parçası)  
304 Kalite Paslanmaz Çelik 1.2 mm, Siyah boyalı  
4-6 mm Derz için



## SER-316

ARA KLİPS (Taş tutturma ara tırnak )  
304 Kalite Paslanmaz Çelik 1.2 mm, talepedilen RAL kodunda boyanır.  
15-16 mm Taşlar için

SER-701



taşıyıcı çarpma fitil  
mullion acoustical (epdm)

70 gr/m

15 kg  
(kutda)

214 m  
(kutda)